

METALTECH

MAXI ROUND ALUMINUM Scaffold

CONTRACTOR SERIES

700 lbs
CAPACITY

All aluminum

Light weight : 63 lbs

Anti-slip platforms

Multi-level working area

Compact storage



TECHNICAL INFORMATION

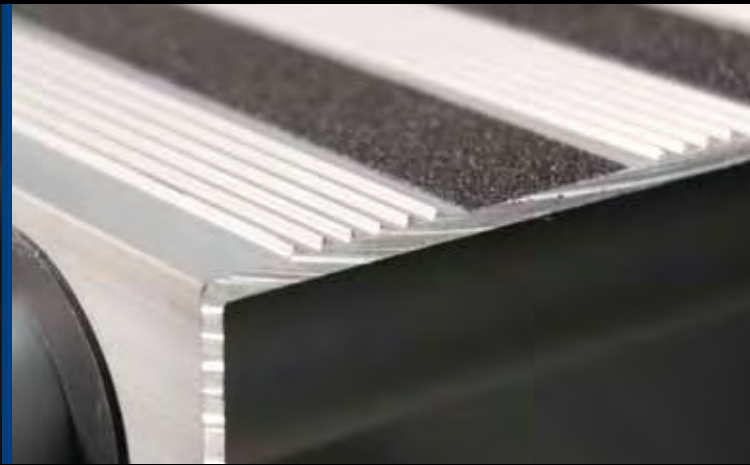
MAXI ROUND ALUMINUM Scaffold

CONTRACTOR SERIES

| | | | | |
|-------------------|--|------------------------------|------------------|--------------|
| | MODEL | MAXI ROUND ALUMINUM SCAFFOLD | | UPC |
| | CAIRC | | | 778300420155 |
| DIMENSIONS | HEIGHT | LENGTH | WIDTH | |
| • Scaffold : | 72" - (182.88 cm) | 56.5" - (143.5 cm) | 29" - (73.66 cm) | |
| • Box : | 6.5" - (16.5 cm) | 30.7" - (78 cm) | 67.3" - (171 cm) | |
| COATING | | | | |
| • Structure : | Anodized aircraft grade aluminum alloy 6061-T6 | | | |
| • Platforms (3) : | Anti-slip anodized aircraft grade aluminum alloy 6061-T6 | | | |
| MATERIAL | Structure : Post \varnothing 1 1/2". Crossbar \varnothing 1 1/4" | | | |
| MAXIMUM CHARGE | 700 lbs - (317 kg) | | | |
| WEIGHT | 63 lbs - (29 kg) | | | |



5" double lock casters



High efficiency anti-slip platforms

>> Meets CSA and OSHA standards

METALTECH

WWW.METALTECH.INFO

METALTECH-OMEGA INC.

1735 St. Elzear Blvd. West, Laval (Quebec) Canada H7L 3N6

Tel.: 450 681-6440 / 1 800 363-7587 Fax: 450 681-7905

SMAXRA03EN09